

**SANYO****LB1674V****Brushless, Sensorless Motor Driver****Overview**

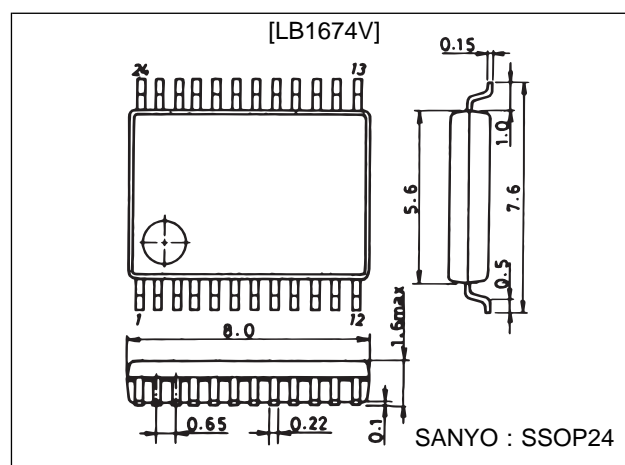
The LB1674V is a small motor driver ideal for mini-cassettes, headphone stereos and micro-cassettes.

**Functions and Features**

- 3-phase unipolar, brushless, sensorless motor driver
- Reverse function
- Built-in speed control function (V servo)
- Built-in reference voltage (0.5 V)
- Soft switching driver

**Package Dimensions**

unit : mm

**3175A-SSOP24****Specifications****Absolute Maximum Ratings at  $T_a = 25^\circ\text{C}$** 

Parameter	Symbol	Conditions	Ratings	Unit
Maximum supply voltage	$V_{CC \text{ max}}$		5	V
Output transistor withstand voltage	$V_{sus}$		10	V
Maximum output current	$I_{m \text{ max}}$		0.6	A
Allowable power dissipation	$P_{d \text{ max}}$	$T_j = 125^\circ\text{C}$	0.4	W
Operating temperature	$T_{opr}$		0 to + 80	$^\circ\text{C}$
Storage temperature	$T_{stg}$		-40 to + 125	$^\circ\text{C}$

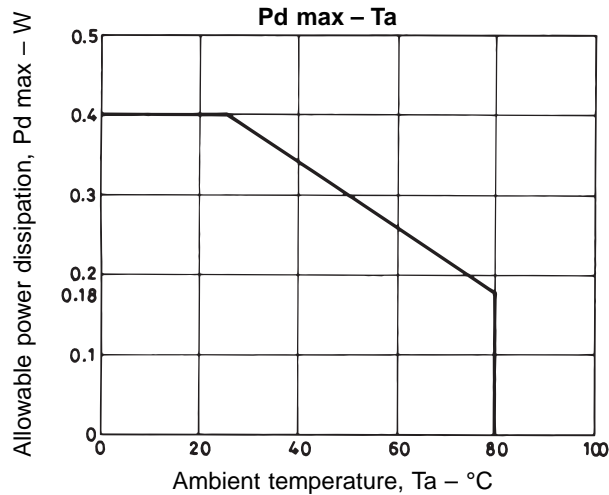
**Allowable Operating Range at  $T_a = 25^\circ\text{C}$** 

Parameter	Symbol	Conditions	Ratings	Unit
Supply voltage	$V_{CC}$		1.0 to 3.5	V

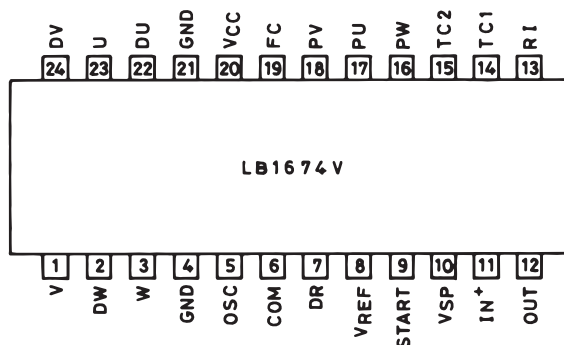
# LB1674V

## Electrical Characteristics at Ta = 25°C, VCC = 1.5 V, unless otherwise noted

Parameter	Symbol	Conditions	min	typ	max	Unit
Supply current	I <sub>CC</sub>	START pin: high		6.5	10	mA
		START pin: low		0	10	μA
Reference voltage	V <sub>ref</sub>		0.47	0.50	0.53	V
Reference-voltage characteristic	$\frac{\Delta V_{ref}}{V_{ref}} / \Delta V_{CC}$	V <sub>CC</sub> = 1.0 to 3.5 V		1	1.5	%/V
Reference-voltage load characteristics	$\frac{\Delta V_{ref}}{\Delta I_{ref}}$	I <sub>ref</sub> = 0 to -50 μA	-0.2	-0.06		mV/μA
Reference-voltage temperature characteristics	$\frac{\Delta V_{ref}}{V_{ref}} / \Delta T_a$	T <sub>a</sub> = 0 to 80°C		0.01		%/°C
Speed signal detection accuracy	V <sub>sp</sub>	V <sub>IN</sub> = 750 mV	140	155	170	mV
Speed signal interphase error			-5		+5	%
Speed-signal voltage characteristics	$\frac{\Delta V_{sp}}{V_{sp}} / \Delta V_{CC}$	V <sub>CC</sub> = 1.0 to 3.5 V		2	3	%/V
Speed-signal temperature characteristics	$\frac{\Delta V_{sp}}{V_{sp}} / \Delta T_a$	V <sub>IN</sub> = 0.75 V, T <sub>a</sub> = 0 to 80°C		0.05		%/°C
Current detection accuracy	V <sub>RI</sub>	V <sub>IN1</sub> = 0.3 V, V <sub>IN2</sub> = 1.0 V, R <sub>I</sub> = 330 Ω	70	85	100	mV
Current detection ratio	K <sub>I</sub>	V <sub>IN1</sub> = 0.3 V, V <sub>IN2</sub> = 1 to 1.3 V	0.17	0.22	0.27	
Starting pulse period	T <sub>S</sub>	C <sub>S</sub> = 0.1 μF		32		ms
COM <sub>⊖</sub> lead-in current	I <sub>COM<sub>⊖</sub></sub>		25	35	45	μA
Output saturation voltage	V <sub>sat</sub>	V <sub>CC</sub> = 1.0 V, I <sub>m</sub> = 0.3 A		0.15	0.25	V
Logic input high-level voltage	V <sub>H</sub>		0.9			V
Logic input low-level voltage	V <sub>L</sub>				0.3	V
TC pin lead-in current	I <sub>TC</sub>		35	50	65	μA



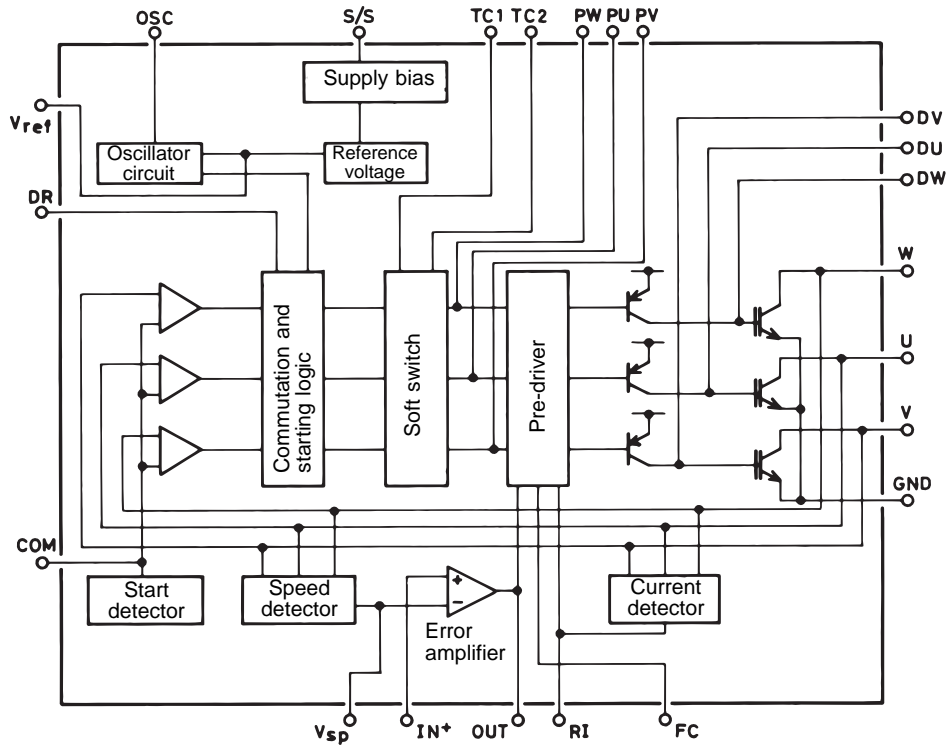
## Pin Assignment



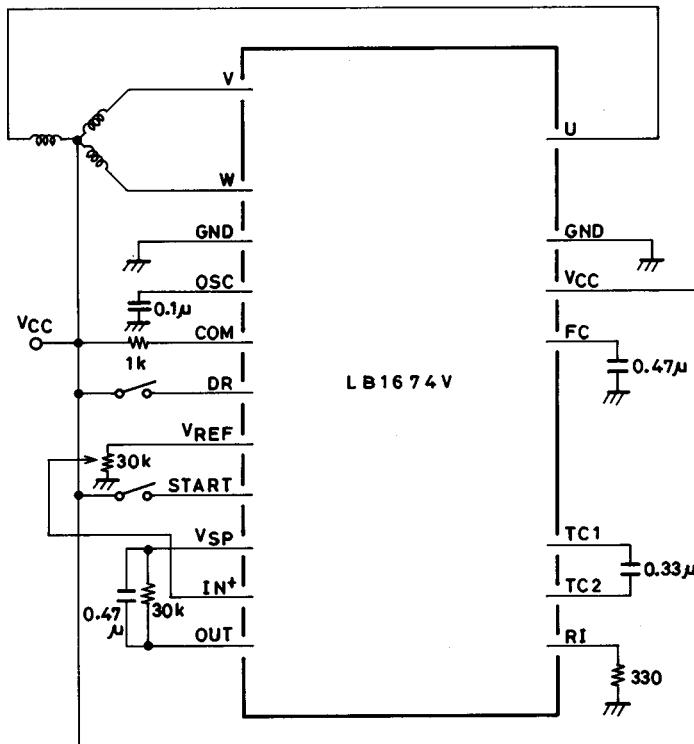
Top view

# LB1674V

## Equivalent Circuit Block Diagram



## Sample Application Circuits at $V_{CC} = 1.5\text{ V}$



Note:  
PU, PV and PW are internal  
operation measurement pins.

Unit (resistance:  $\Omega$ , capacitance: F)

# LB1674V

## Pin Description

Unit (resistance:  $\Omega$ )

Pin Number	Pin Name	Equivalent Circuit	Description
1 3 23	V W U		<ul style="list-style-type: none"> <li>Motor coil connection pins</li> </ul>
2 22 24	DW DU DV		<ul style="list-style-type: none"> <li>Power transistor base pins</li> </ul>
4	GND		<ul style="list-style-type: none"> <li>Power and signal ground</li> </ul>
5	OSC		<ul style="list-style-type: none"> <li>Starting pulse period set pin</li> </ul>
6	COM $\ominus$		<ul style="list-style-type: none"> <li>Start-up waveform detection circuit offset set pin</li> </ul>
7	DR		<ul style="list-style-type: none"> <li>Drive direction switch pin (normally low)</li> </ul>
8	Vref		<ul style="list-style-type: none"> <li>Reference voltage pin (0.5 V)</li> </ul>
9	START		<ul style="list-style-type: none"> <li>Start/stop control pin. Active-high</li> </ul>
10	Vsp		<ul style="list-style-type: none"> <li>Speed signal (motor induction voltage) detector</li> </ul>

Continued on next page.

# LB1674V

Continued from preceding page.

Unit (resistance:  $\Omega$ )

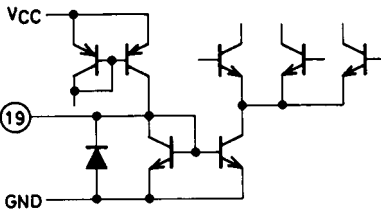
Pin Number	Pin Name	Equivalent circuit	Description
11	IN <sup>+</sup>		<ul style="list-style-type: none"> <li>Speed signal error amplifier reference input pin</li> </ul>
12	OUT		<ul style="list-style-type: none"> <li>Speed signal error amplifier output for motor current feedback</li> </ul>
13	RI		<ul style="list-style-type: none"> <li>Motor current detection pin</li> </ul>
14	TC1		<ul style="list-style-type: none"> <li>Motor current rising/falling time constant set pins</li> </ul>
15	TC2		<ul style="list-style-type: none"> <li>Motor current rising/falling time constant set pins</li> </ul>
16 17 18	PW PU PV		<ul style="list-style-type: none"> <li>Current waveform generator.</li> <li>Internal operation measurement pins. Must be left open.</li> </ul>

Continued on next page.

## LB1674V

Continued from preceding page.

Unit (resistance:  $\Omega$ )

Pin Number	Pin Name	Equivalent circuit	Description
19	FC		<ul style="list-style-type: none"> <li>• Abnormal oscillation stop pin</li> </ul>
20	$V_{CC}$		<ul style="list-style-type: none"> <li>• Power supply</li> </ul>
21	GND		<ul style="list-style-type: none"> <li>• Power and signal ground</li> </ul>

- No products described or contained herein are intended for use in surgical implants, life-support systems, aerospace equipment, nuclear power control systems, vehicles, disaster/crime-prevention equipment and the like, the failure of which may directly or indirectly cause injury, death or property loss.
- Anyone purchasing any products described or contained herein for an above-mentioned use shall:
  - ① Accept full responsibility and indemnify and defend SANYO ELECTRIC CO., LTD., its affiliates, subsidiaries and distributors and all their officers and employees, jointly and severally, against any and all claims and litigation and all damages, cost and expenses associated with such use:
  - ② Not impose any responsibility for any fault or negligence which may be cited in any such claim or litigation on SANYO ELECTRIC CO., LTD., its affiliates, subsidiaries and distributors or any of their officers and employees jointly or severally.
- Information (including circuit diagrams and circuit parameters) herein is for example only; it is not guaranteed for volume production. SANYO believes information herein is accurate and reliable, but no guarantees are made or implied regarding its use or any infringements of intellectual property rights or other rights of third parties.

This catalog provides information as of August, 1996. Specifications and information herein are subject to change without notice.